

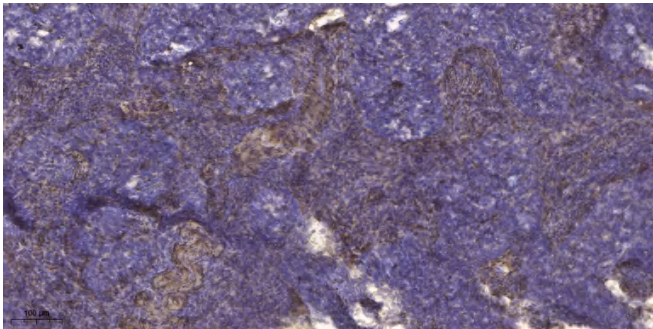


## Kallikrein-4 (Cleaved-Ile31) rabbit pAb

<b>Catalog No</b>	YP-Ab-04388
<b>Isotype</b>	IgG
<b>Reactivity</b>	Human;Rat;Mouse;
<b>Applications</b>	WB;IHC
<b>Gene Name</b>	KLK4 EMSP1 PRSS17 PSTS
<b>Protein Name</b>	Kallikrein-4 (Cleaved-Ile31)
<b>Immunogen</b>	Synthesized peptide derived from human Kallikrein-4 (Cleaved-Ile31)
<b>Specificity</b>	This antibody detects endogenous levels of Human Kallikrein-4 (Cleaved-Ile31, protein was cleaved amino acid sequence between 30-31 )
<b>Formulation</b>	Liquid in PBS containing 50% glycerol, 0.5% BSA and 0.02% sodium azide.
<b>Source</b>	Polyclonal, Rabbit,IgG
<b>Purification</b>	The antibody was affinity-purified from rabbit serum by affinity-chromatography using specific immunogen.
<b>Dilution</b>	WB 1:500-2000;IHC-p 1:50-300
<b>Concentration</b>	1 mg/ml
<b>Purity</b>	≥90%
<b>Storage Stability</b>	-20°C/1 year
<b>Synonyms</b>	Kallikrein-4 (EC 3.4.21.-;Enamel matrix serine proteinase 1;Kallikrein-like protein 1;KLK-L1;Prostase;Serine protease 17)
<b>Observed Band</b>	25kD
<b>Cell Pathway</b>	Secreted.
<b>Tissue Specificity</b>	Expressed in prostate.
<b>Function</b>	
<b>Background</b>	
<b>matters needing attention</b>	Avoid repeated freezing and thawing!
<b>Usage suggestions</b>	This product can be used in immunological reaction related experiments. For more information, please consult technical personnel.



## Products Images



Immunohistochemical analysis of paraffin-embedded human cervical carcinoma. 1, Antibody was diluted at 1:200(4° overnight). 2, Tris-EDTA,pH9.0 was used for antigen retrieval. 3,Secondary antibody was diluted at 1:200(room temperature, 45min).